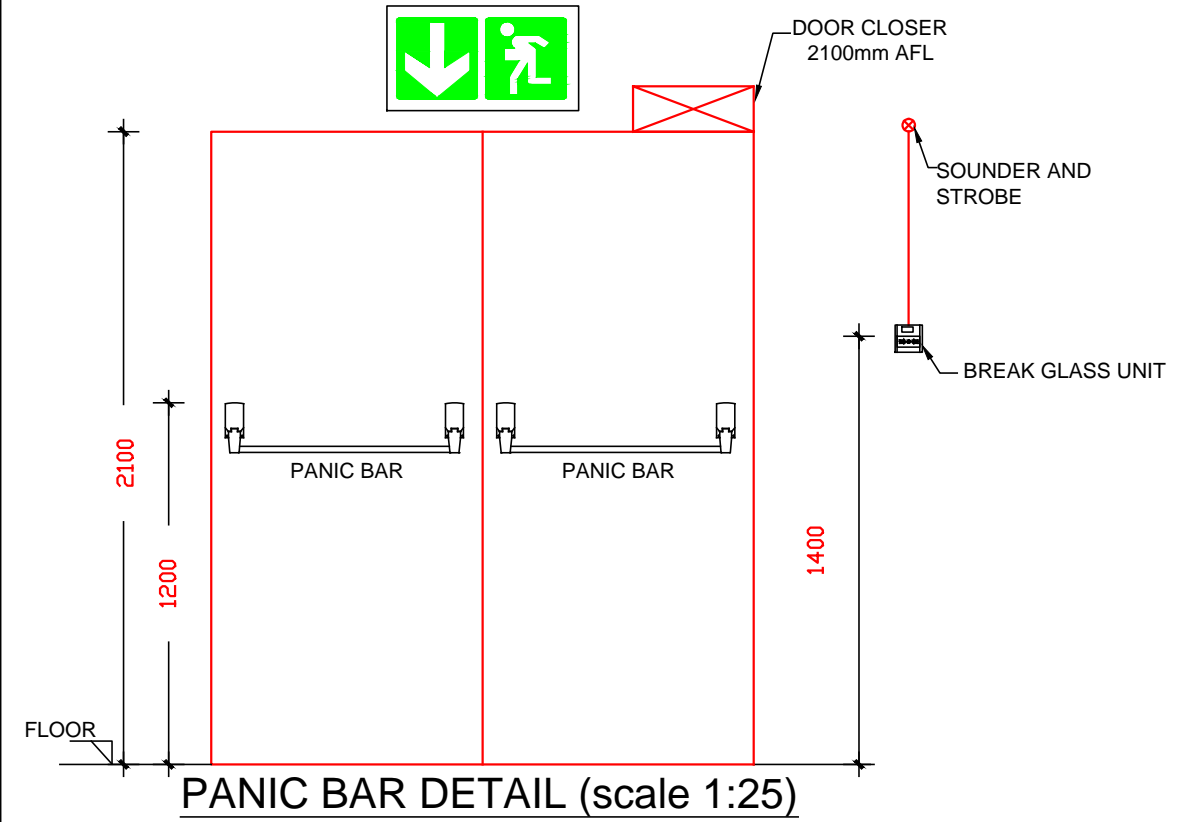
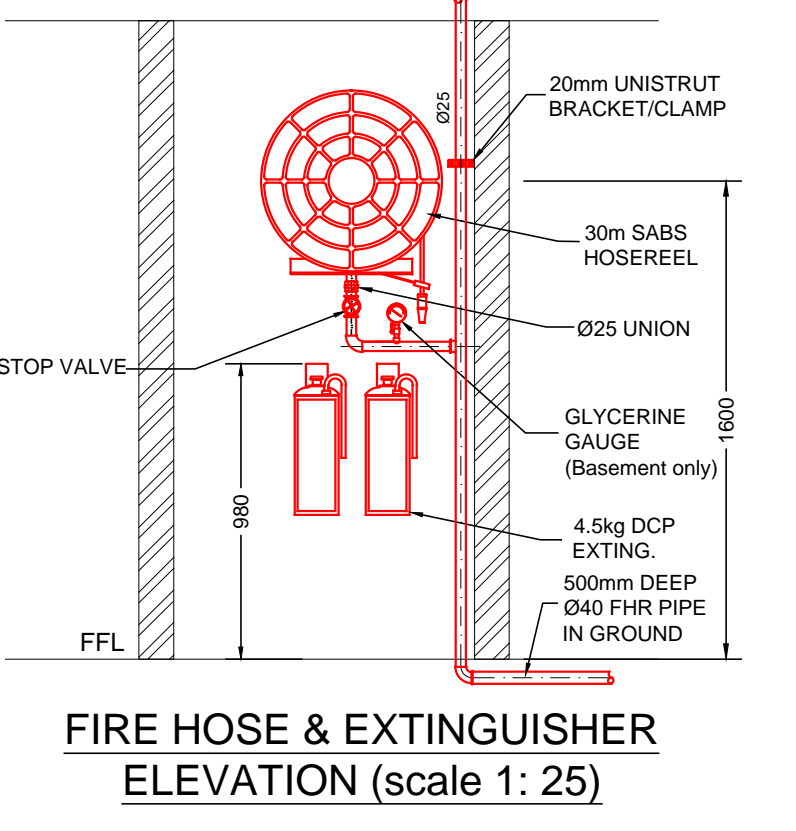
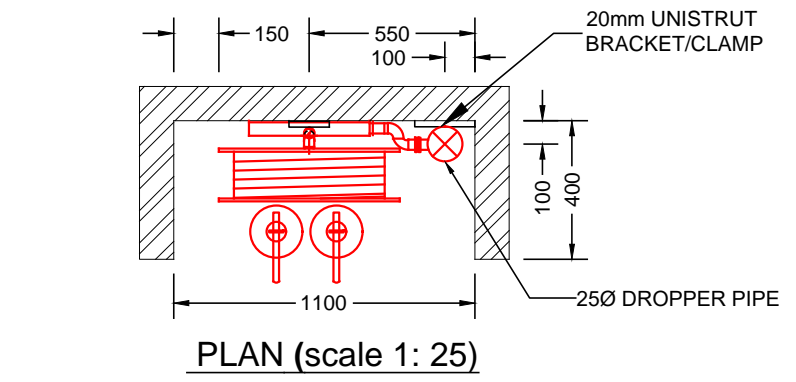
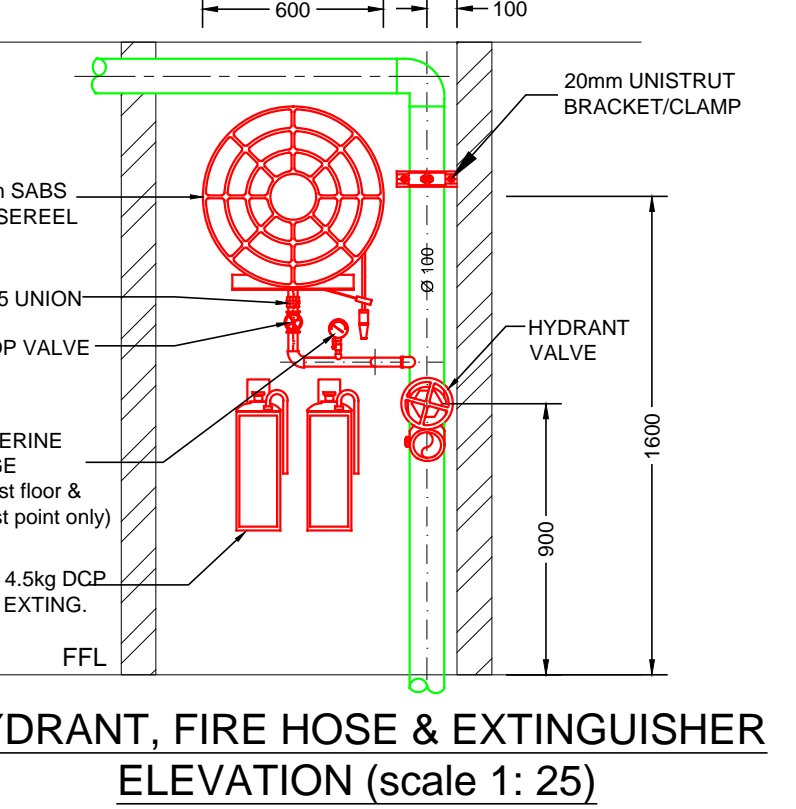
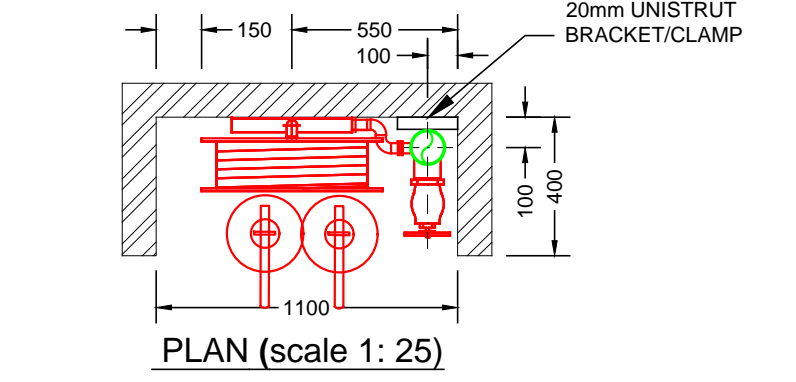


| FIRE SIGNS & EQUIPMENT COUNT | | | | | | | | | | | | | |
|------------------------------|----|----|----|----|-----|-----|-----|----|----|----|-----|-----|-----|
| SYMBOL | | | | | | | | | | | | | |
| REFERENCE | E1 | E2 | E3 | E6 | F13 | F16 | F19 | F1 | F2 | F3 | F45 | F31 | FHR |
| QUANTITY | 7 | 4 | 5 | 3 | 4 | 3 | 2 | 1 | 2 | 2 | 3 | 4 | 1 |



- ### SCOPE OF WORKS CLARIFICATION
- FIRE CONTRACTOR**
 - SERVICE AND RE-USE EXISTING FIRE EXTINGUISHERS AND 1-OFF FIRE HOSE REELS.
 - SUPPLY & INSTALL 1-OFF NEW FIRE HYDRANT.
 - SUPPLY & INSTALL NEW FIRE SIGNAGE AS INDICATED ON PLAN.
 - NEW EVACUATION PLANS & PROCEDURES.
 - ELECTRICAL CONTRACTOR**
 - SUPPLY AND INSTALL EMERGENCY LIGHTING THROUGHOUT THE SPACE AS SHOWN ON PLAN, c/w BATTERY BACKUP.
 - BUILDER**
 - SUPPLY AND INSTALL PANIC BARS c/w WHITE ON GREEN "PUSH BAR TO OPEN" SIGN
 - PROVIDING PENETRATIONS THROUGH CEILINGS AND WALLS AND MAKING GOOD THEREOF.
 - FIXING OF EXTINGUISHER BACKING BOARDS TO WALLS SUPPLIED BY FIRE CONTRACTOR.
 - SUPPLY & INSTALL NEW FIRE DOORS c/w 25mm STEEL FRAME AND DOOR CLOSER.
 - FIRE SEALING OF PENETRATIONS THROUGH FIRE WALLS.

- ### FIRE INSTALLATION NOTES
- #### PORTABLE FIRE EXTINGUISHERS
- FIRE EXTINGUISHERS SHALL BE 4.5kg AND 9kg DRY CHEMICAL POWDER TYPE AND SHALL COMPLY WITH SABS 810. ALL FIRE EXTINGUISHERS SHALL BE MOUNTED ON WOODEN BACKING BOARDS.
- #### FIRE HOSE REELS
- FIRE HOSE REELS SHALL CONFORM TO SABS 543. ALL FIRE HOSE REELS SHALL BE COMPLETE WITH 30 METERS OF HOSE AND SHALL HAVE A MINIMUM FLOW RATE OF 0.5 l/s AT 300 kPa.
- #### FIRE HYDRANTS
- FIRE HYDRANTS SHALL COMPLY WITH SABS 543 AND HAVE A MINIMUM FLOW RATE OF 20 l/s AT 300 kPa.
- #### PIPING
- NO PIPEWORK TO BE EMBEDDED IN SCREEN OR CONCRETE FLOORS. ALL PIPEWORK SHALL CONFORM TO SABS 62 (STEEL, MEDIUM).
- THE DISTANCE BETWEEN PIPE SUPPORT BRACKETS FOR THE HORIZONTAL & VERTICAL PIPEWORK, SHALL NOT EXCEED THE FOLLOWING:
- | NOMINAL DIAMETER | MAXIMUM SPACING |
|------------------|-----------------|
| < 65 MM | 4M |
| > 65MM | <100MM |
- PIPING SHALL BE PROPERLY CLEANED OFF SITE, FROM RUST & LOOSE MILL SCALE WITH A HARD WIRE, & DECREASED PRIOR TO APPLICATION OF A RED OXIDE PRIMER.FINAL COATS OF PAINT TO BE 2 OFF SIGNAL RED, HIGH GLOSS ENAMEL TO SABS 630. ALL BRACKETS, SUPPORTS & FITTINGS TO BE GALVANIZED. ALL SCREWED JOINTS TO COMPLY WITH BS 21 OR SIMILAR. SEALINGS OF JOINTS WILL BE WITH HEMP, STOGG OR PTFE TAPE. HYDRAULIC PRESSURE TESTING SHALL BE DONE TO 15 BAR FOR A PERIOD OF 24 HOURS.
- #### SYMBOLIC SAFETY SIGNAGE
- SYMBOLIC SAFETY SIGNAGE SHALL COMPLY WITH SABS 1186 PART V AND SHALL BE OF THE PHOTOLUMINESCENT TYPE. SIGNAGE SHALL BE INSTALLED SUCH AS TO CLEARLY INDICATE THE POSITIONS OF ALL FIRE EQUIPMENT AND ESCAPE ROUTES. EACH FLOOR LEVEL SHALL BE NUMBERED IN THE ESCAPE STAIRS. SIGNAGE ON DRAWING IS AN INDICATION OF SIGNAGE REQUIRED. FINAL SIGNAGE TO BE DETERMINED ON SITE. ADDITIONAL SIGNAGE TO BE ADDED SHOULD IT BE REQUESTED BY THE LOCAL AUTHORITIES. FINAL FIRE SIGNAGE IS TO BE DETERMINED ON SITE WITH THE COUNCIL'S FIRE OFFICER.
- #### FIRE DOORS
- FIRE DOORS OF THE RATING AND WIDTH AS INDICATED ON THE DRAWINGS, SHALL BE INSTALLED AND SHALL COMPLY WITH SANS 1253. ALL FIRE DOORS TO BE FITTED WITH SELF CLOSING MECHANISMS
- #### FIRE ALARM / DETECTION
- FIRE DETECTION AND ALARM SYSTEM SHALL BE INSTALLED AS INDICATED ON THE DRAWINGS AND IN ACCORDANCE WITH SANS 10139.
- #### ESCAPE DOORS
- ALL ESCAPE DOORS SHALL BE COMPLETE WITH FIRE ESCAPE IRONMONGERY.
- #### FIRE ESCAPE ROUTES
- FIRE ESCAPE ROUTES, INCLUDING CORRIDORS AND STAIRWAYS SHALL HAVE MINIMUM WIDTH OF 1500mm UNLESS SHOWN OTHERWISE. ALL ESCAPE ROUTES SHALL HAVE A FIRE RESISTANCE AS INDICATED. ALL EMERGENCY ROUTES SHALL HAVE A FIRE RESISTANCE AS INDICATED ON THE DRAWINGS.



- ### FIRE SERVICES LEGEND
- BREAK GLASS UNIT
 - HOSE REEL
 - FIRE HYDRANT
 - 4.5kg DCP FIRE EXTINGUISHER
 - DIRECTIONAL ARROW
 - FIRE ESCAPE
 - 60MIN FIRE RATED LIFT LANDING DOOR
 - 120 MINUTE FIRE RATED WALL

| FIRE DESIGN CONFIRMATION | | |
|--|--|-----|
| DEEMED TO SATISFY WITH SANS 10400 | | N/A |
| RATIONAL ASSESSMENT | | YES |
| RATIONAL DESIGN EQUIVALENT OR SUPERIOR TO SANS 10400 | | N/A |

ISSUE DATE: 2021-06-02
REVISION: A
X FOR INFORMATION
FOR APPROVAL
FOR TENDER
FOR CONSTRUCTION
AS-BUILT

| REVISIONS | | | | |
|-----------|------------|------------------------|--------|--------|
| No | Date | Description | Rev By | Ckd By |
| A | 02/06/2021 | ISSUED FOR INFORMATION | B.A | H.R |

CONSULTMECH
Mechanical Engineers

09 Plantanus Street
Kuilsriver
7580

Cell.: (072) 948 4470
Tel.: (021) 903 1407
Email: info@consultmech.co.za

PROJECT: LAHA LA SRS - BLOCK B

DWG TITLE: BROOKLYN

DWG NUMBER: 21B09-F-502-03

DESIGNED BY: M. MAJEKE

CHECKED BY: H.D ROUX

APPROVED BY: H.D ROUX

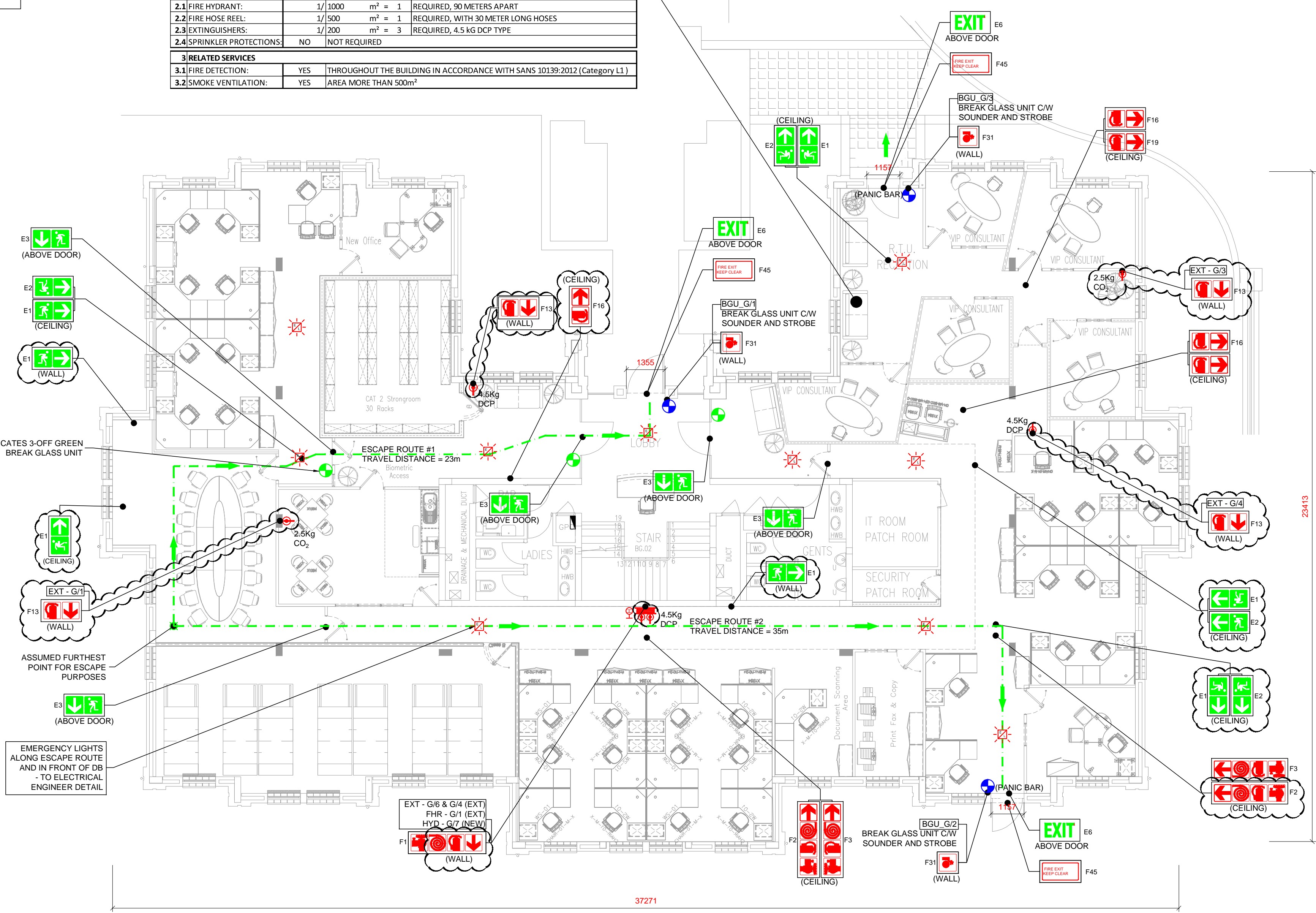
SCALE: 1:100 @ A1

ECSA NUMBER: 201070151

ECSA NUMBER: 201070151

COPYRIGHT AND RIGHT OF REPRODUCTION OF THIS DRAWING OR ANY PORTION THEREOF IS RESERVED BY THE ENGINEERS

| FIRE SERVICES DESIGN SUMMARY SCHEDULE | | | |
|---------------------------------------|---------|--------|--|
| 1.OCCUPANCY INFORMATION | | | |
| 1.1 FLOOR AREA: | 657 | m² | OCCUPIED |
| 1.2 OCCUPANCY CLASS: | G1 | | OFFICE |
| 1.3 POPULATION: | 1/ SEAT | 80 | NUMBER OF PEOPLE |
| 1.4 ROUTES OF ESCAPE required: | | | 2-off 1157mm & 1-off 1355mm wide |
| 2.FIRE PROTECTION EQUIPMENT | | | |
| 2.1 FIRE HYDRANT: | 1/ 1000 | m² = 1 | REQUIRED, 90 METERS APART |
| 2.2 FIRE HOSE REEL: | 1/ 500 | m² = 1 | REQUIRED, WITH 30 METER LONG HOSES |
| 2.3 EXTINGUISHERS: | 1/ 200 | m² = 3 | REQUIRED, 4.5 kg DCP TYPE |
| 2.4 SPRINKLER PROTECTIONS: | NO | | NOT REQUIRED |
| 3.RELATED SERVICES | | | |
| 3.1 FIRE DETECTION: | YES | | THROUGHOUT THE BUILDING IN ACCORDANCE WITH SANS 10139:2012 (Category LI) |
| 3.2 SMOKE VENTILATION: | YES | | AREA MORE THAN 500m² |



GROUND STOREY - PROPOSED FIRE SERVICES LAYOUT (Scale 1:100)



Local Authority stamp